

HOW TO CHANGE THE COLORS OF MINT-X GTK THEME IN LM16 CINNAMON

PART 3

CHANGING NEMO'S SIDEBAR COLOR

INTRODUCTION

In part 2 of this series, **Mint-Blue-2** theme was created, which is an adaptation of Linux Mint 16 Cinnamon's default theme, Mint-X.

If you've done the first two parts, you should have have 2 “new” themes:

Mint-Blue - which has a blue selected background color - instead of light-green; and
Mint-Blue-2 - which has the above, as well as a changed background color from light-grey to light-blue.

This time, a copy of the **Mint-Blue-2** theme will be edited to create a third theme - **Mint-blue-nemo** - which will have all the changes of the other two themes - plus a mid-blue sidebar for Nemo, instead of the dark-grey.

A reminder:

When editing these files, take care to preserve the spacing and punctuation. One missing { and your changes will not work!

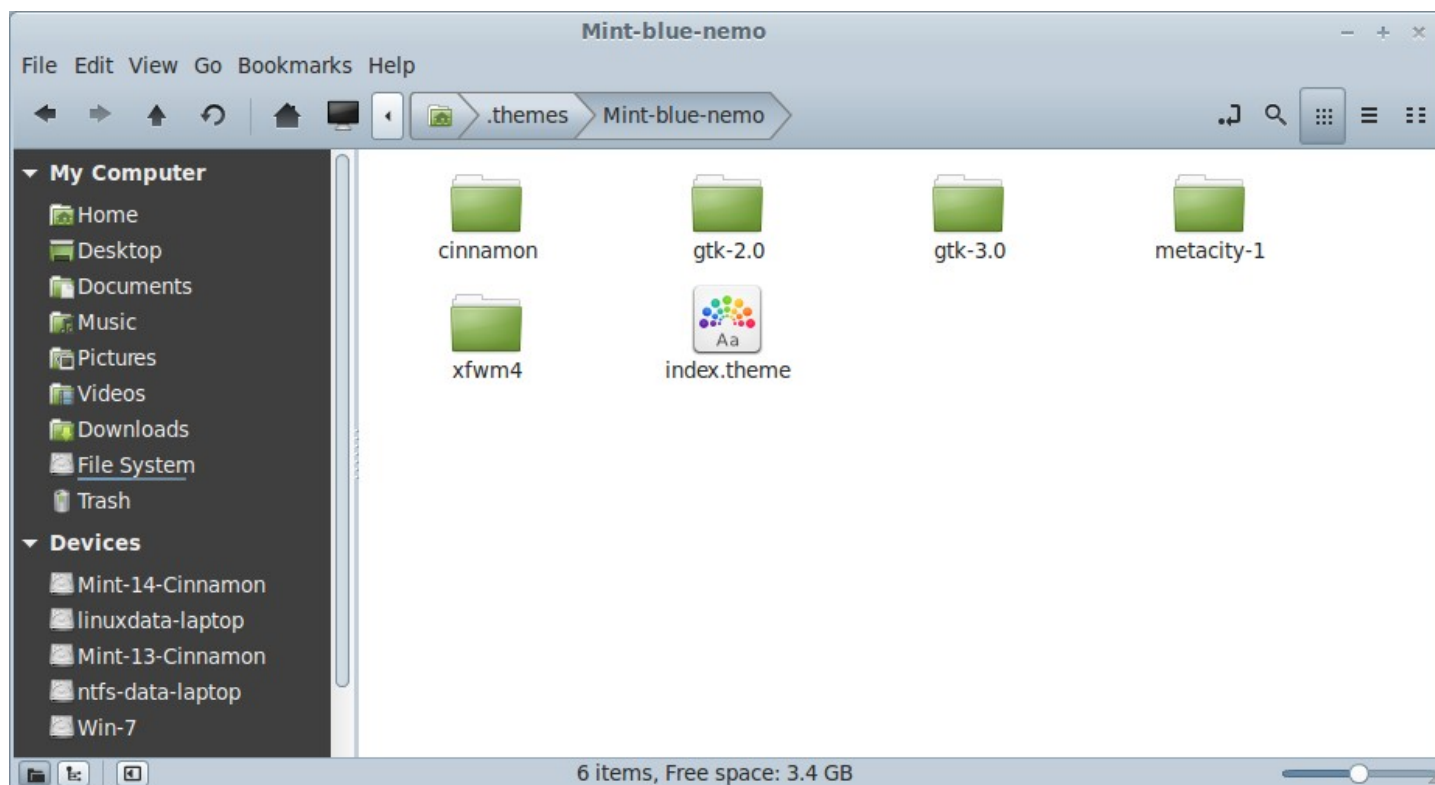
Begin:

Go to `/usr/share/themes`

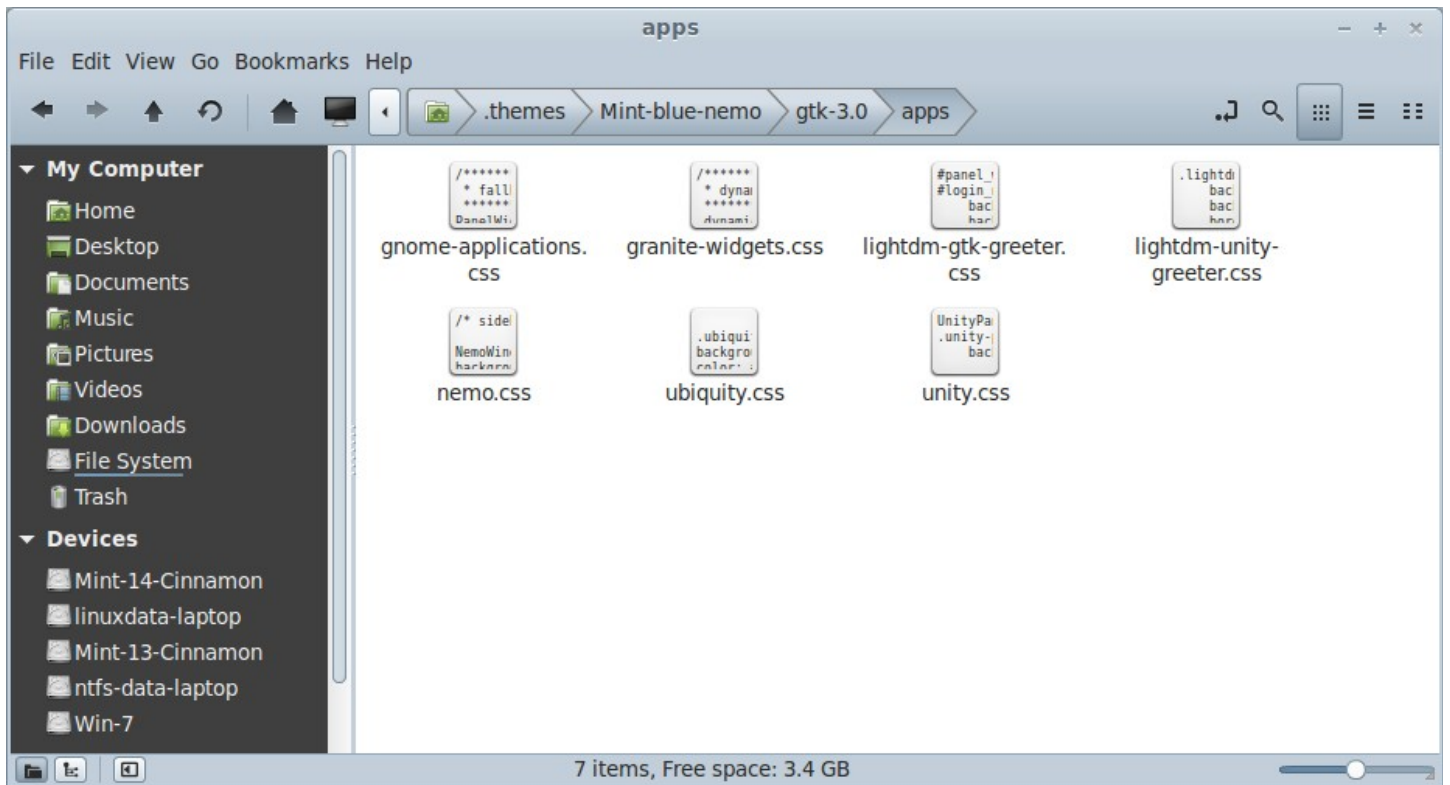
Copy **Mint-Blue-2**

Go to `/home/your-user-name/.themes`, and paste the copy of **Mint-blue-2** into `.themes`.

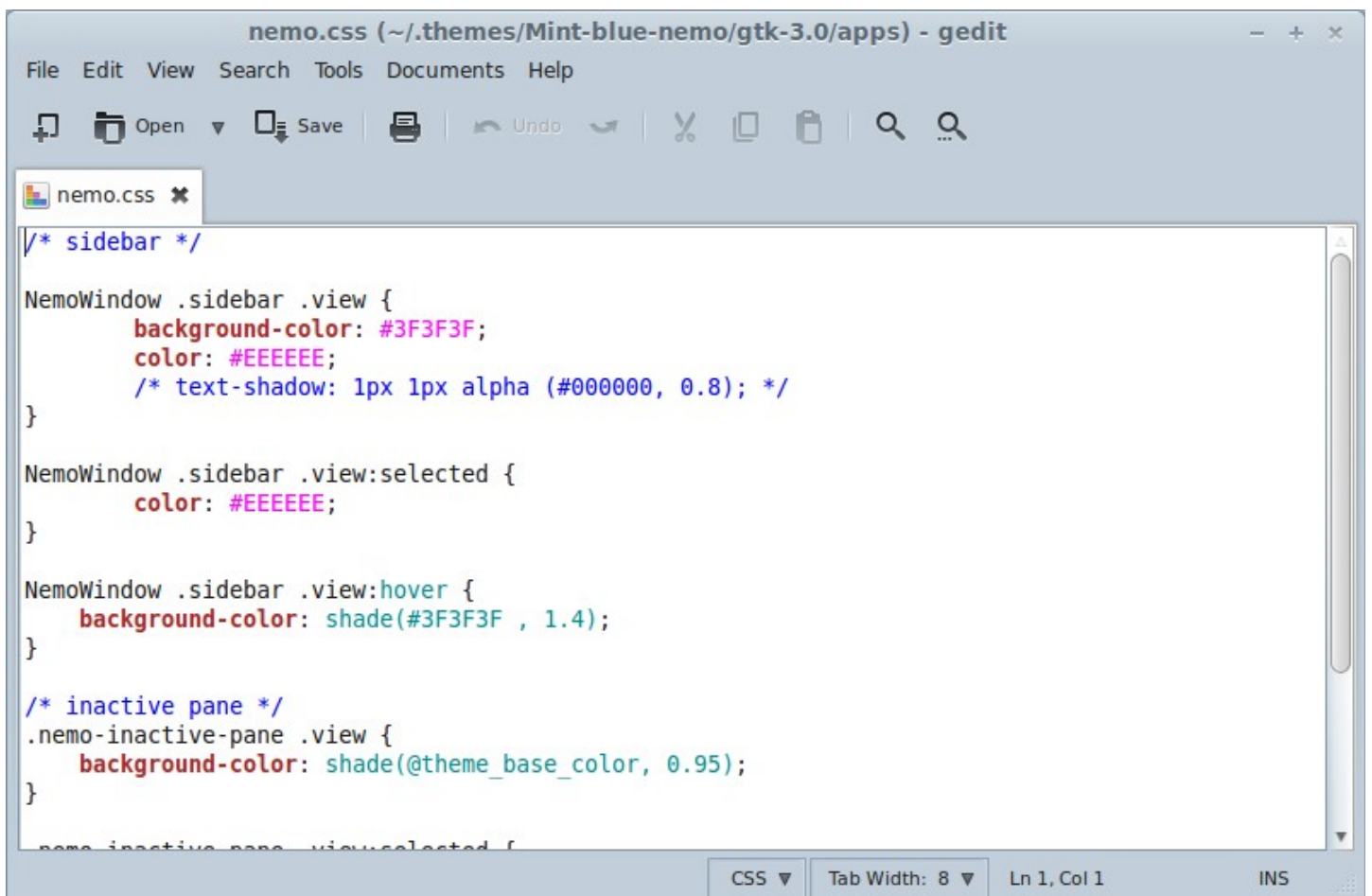
Rename the copy of **Mint-blue-2** to **Mint-blue-nemo**. Open the folder.



Open **gtk-3.0 > apps**



Open the file **nemo.css**



In the `/* sidebar */` section:

```
under  
NemoWindow .sidebar .view {
```

change the line

```
background-color: #3F3F3F;
```

to read:

```
background-color: #2a5a8a;
```

This will change the background of the sidebar from dark-grey to mid-blue.

The next line is the text color line of the sidebar, which is at the moment is a light-grey color:

```
color: #EEEEEE;
```

change it to white:

```
color: #ffffff;
```

Go to the next section:

```
NemoWindow .sidebar .view:selected {
```

change the line here as well from `color: #EEEEEE;` to:

```
color: #ffffff;
```

This changes the text color of the selected item in the sidebar.

In the next section:

```
NemoWindow .sidebar .view:hover {
```

This is the color that appears when you just hover your mouse over an unselected item in the sidebar.

Change the shade color of the `background-color` from a shade of grey, to a shade of blue.

change the line:

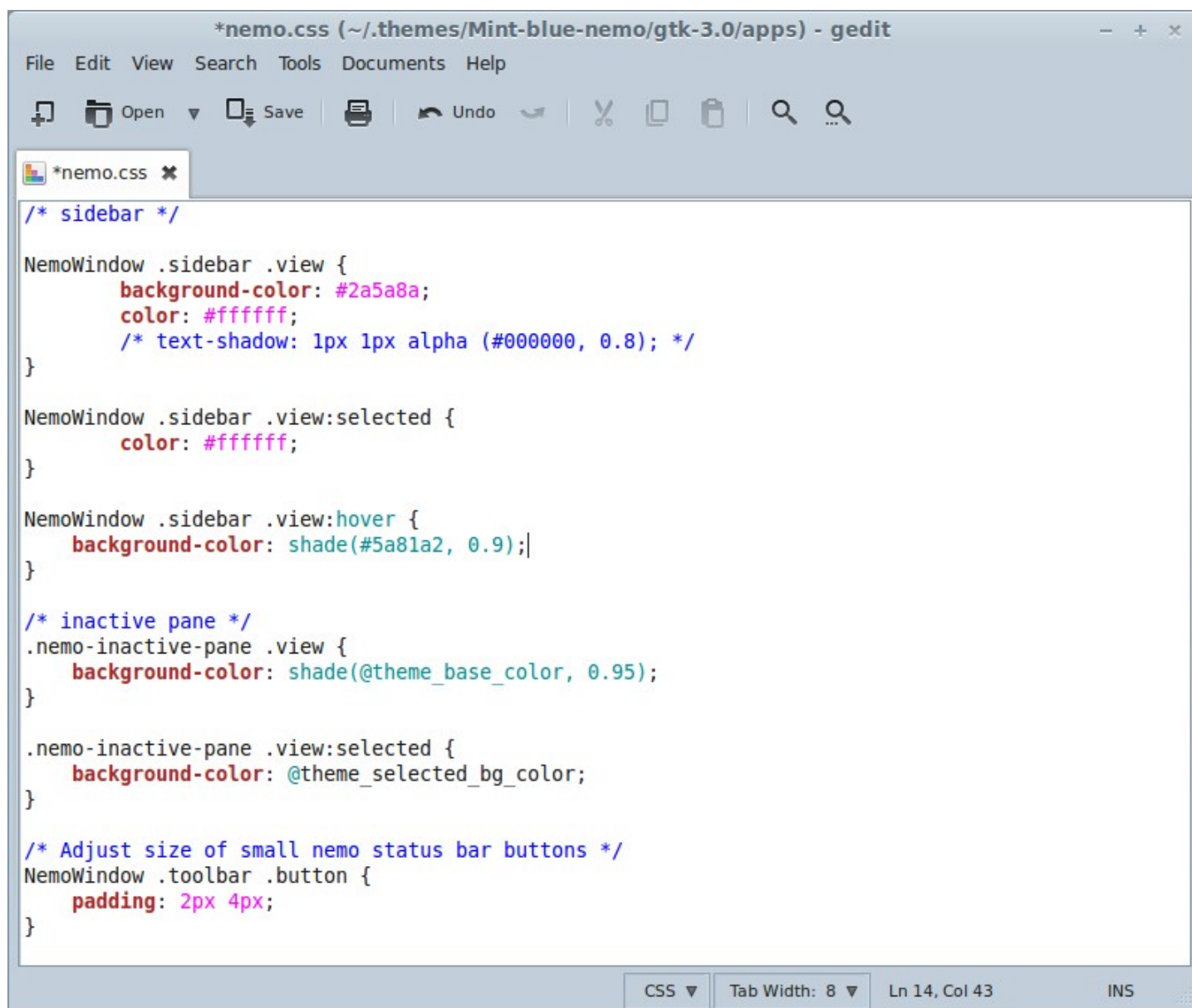
```
background-color: shade(#3F3F3F , 1.4);
```

to read:

```
background-color: shade(#5a81a2, 0.9);
```

Save the file.

So the file should now look like this:



```
*nemo.css (~/.themes/Mint-blue-nemo/gtk-3.0/apps) - gedit
File Edit View Search Tools Documents Help
Open Save Undo
/* sidebar */
NemoWindow .sidebar .view {
    background-color: #2a5a8a;
    color: #ffffff;
    /* text-shadow: 1px 1px alpha (#000000, 0.8); */
}
NemoWindow .sidebar .view:selected {
    color: #ffffff;
}
NemoWindow .sidebar .view:hover {
    background-color: shade(#5a81a2, 0.9);
}
/* inactive pane */
.nemo-inactive-pane .view {
    background-color: shade(@theme_base_color, 0.95);
}
.nemo-inactive-pane .view:selected {
    background-color: @theme_selected_bg_color;
}
/* Adjust size of small nemo status bar buttons */
NemoWindow .toolbar .button {
    padding: 2px 4px;
}
```

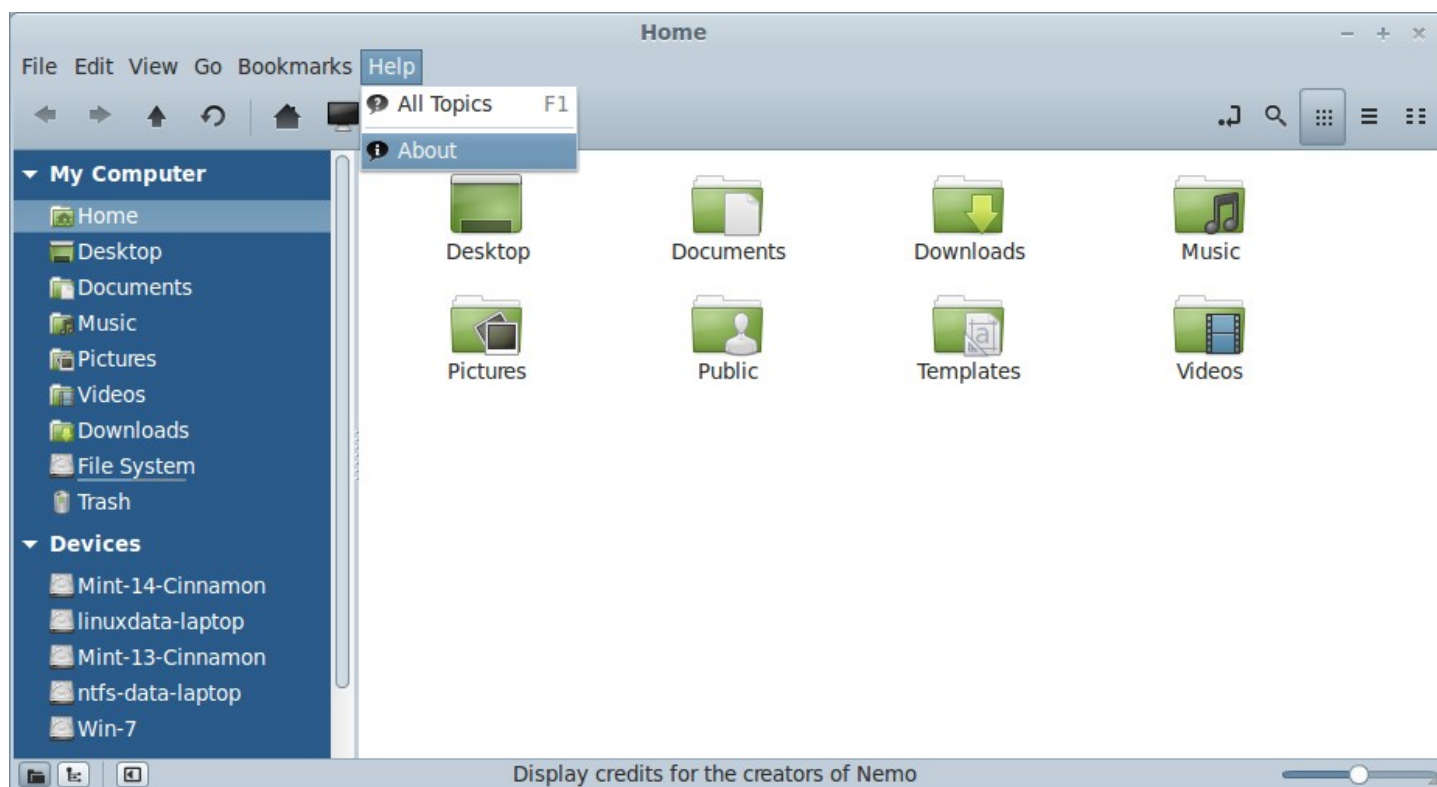
Go to System Settings > Themes > Other Settings

Change the Controls to **Mint-blue-nemo**

Change the Window borders to **Mint-blue-nemo**

Logout/in

Open your /home folder to see the new theme:



To make this sidebar theme display **similarly** in mate and xfce desktop environments, further editing needs to be done.

For caja sidebar in mate:

Go to **~/.themes/Mint-blue-nemo/gtk-2.0/Apps/Caja**

Right-click the image side-bg.png > Open with GIMP Image Editor

With the same technique as in part 2 make caja's sidebar blue like nemo's.

In Toolbox on the left, click the Foreground color box.

Change Foreground Color box opens

In the HTML notation box, enter **2a5a8a**, click ok.

In the image window's menubar -

click Edit > Fill with FG color

click File > Overwrite side-bg.png

click File > Close View

click Close Without Saving

Now go to back to **~/.themes/Mint-blue-nemo/gtk-2.0/Apps**

Double-click the file caja.rc > click Display

Scroll down to the section

```
style "caja-sidebar"
```

```
{
```

under the line

```
base[NORMAL]           = "#EEEEEE"
```

add this line:

```
text[NORMAL]           = #ffffff"
```

Save the file.

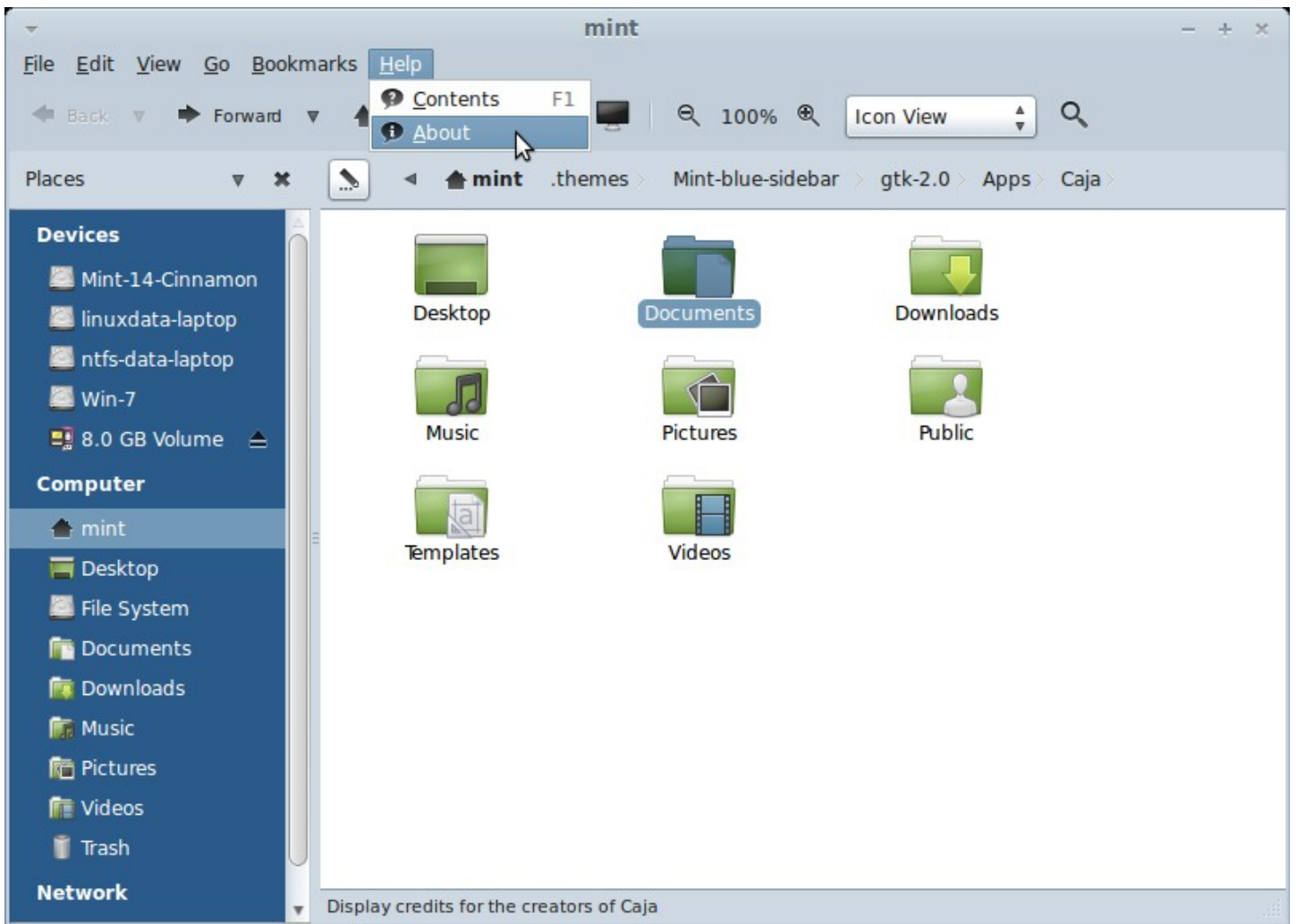
It should look like this:

The image shows a screenshot of a text editor window titled "caja.rc (~/.themes/Mint-blue-sidebar/gtk-2.0/Apps) - pluma". The window contains a style definition for "caja-sidebar". The style is defined as follows:

```
}  
}  
style "caja-sidebar"  
{  
    GtkTreeView::horizontal-separator      = 4  
  
    xthickness                             = 0  
    ythickness                             = 1  
  
    bg[NORMAL]                             = "#EEEEEE"  
    base[NORMAL]                           = "#EEEEEE"  
    text[NORMAL]                           = "#ffffff"  
  
    engine "pixmap"  
    {  
        image  
        {  
            function                       = FLAT_BOX  
            recolorable                    = TRUE  
            state                          = NORMAL  
            file                            = "Apps/Caja/side-bg.png"  
        }  
    }  
}
```

The line `text[NORMAL] = "#ffffff"` is highlighted with a red rectangular box. The status bar at the bottom of the window shows "Plain Text", "Tab Width: 4", "Ln 1, Col 1", and "INS".

This will make the text in caja's sidebar white on the blue background:



Now to get a similar effect for the sidebar in Thunar - the default file manager in xfce:

Go to **~/.themes/Mint-blue-nemo/gtk-2.0/Apps**

Click File > Create New Document > Empty Document

Open the file and copy/paste the following text into the empty document:

```
#####  
## Some additional thunar-specific theming
```

```
style "sidepane"  
{  
  
    text[NORMAL]    = @selected_fg_color  
    text[SELECTED]  = @selected_fg_color  
    base[NORMAL]    = @link_color  
    base[INSENSITIVE] = shade (1.03,@selected_bg_color)  
    bg[NORMAL]      = @link_color  
    bg[PRELIGHT]    = shade (1.2,@selected_bg_color)  
    engine "murrine"  
    {  
        gradient_shades = {1.1,1.1,1.1,1.1}  
    }  
}  
widget_class "*ThunarShortcutsView*" style "sidepane"  
widget_class "*ThunarTreeView*" style "sidepane"  
widget_class  
"*GtkFileChooserWidget.GtkFileChooserDefault.GtkVBox.GtkHPaned.GtkVBox.GtkScrolled  
Window.GtkTreeView*" style "sidepane"
```

After pasting the above text ...

Click File > Save as ...
Name the file **thunar.rc**
Click Save

Go to ~/.themes/Mint-blue-nemo/gtk-2.0
Double-click the file **gtkrc**
Click Display

In the section **gtk_color_scheme**, at the end
add:
\nlink_color:#2a5a8a"

so it looks like this - note the punctuation at the end:

```
#Based on Clearlooks Revamp 0.45

gtk_color_scheme = "base_color:#ffffff\nfg_color:#212121\ntooltip_fg_color:#EDED\nselected_bg_color:#7399b8\nselected_fg_color:#ffffff\ntext_color:#1A1A1A\nbg_color:#c2cfda\ntooltip_bg_color:#ced8e1\nmenu_fg_color:#212121\nmenu_bg_color:#FEFEFE\nfocus_color:#7399b8\nlink_color:#2a5a8a"

#gtk-menu-popup-delay           = 1|
gtk-button-images               = 0
gtk-icon-sizes                  = "gtk-button=16,16"

style "default"
```

Save the file.

Also, while gtkrc is open, scroll down to the very bottom of the file.

Directly under the last line:
include "Apps/chrome.rc"

add this line:
include "Apps/thunar.rc"

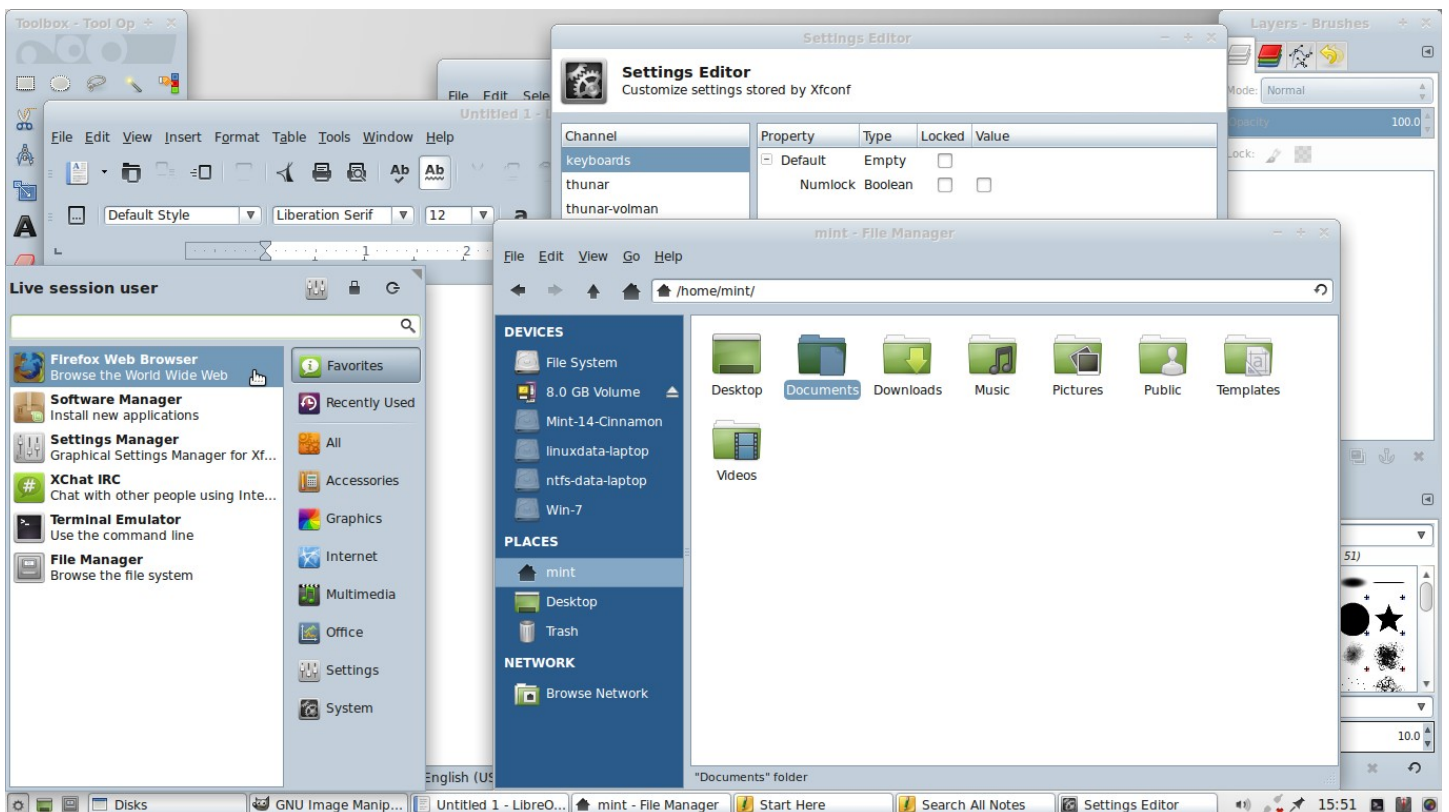
Save the file.

```
*gtkrc (~/.themes/Mintbluenemo/gtk-2.0) - gedit
File Edit View Search Tools Documents Help
Open Save Undo Cut Copy Paste Find
*gtkrc x
GtkWindow.GtkVBox.GtkHPaned.GtkVBox.GtkTable.GtkRadioButton
style:highest "button"

#fix for whiskermenu
widget_class
"GtkWindow.GtkFrame.GtkVBox.GtkHBox.GtkVBox.GtkRadioButton"
style:highest "button"

include "Apps/nautilus.rc"
include "Apps/caja.rc"
include "Apps/terminal.rc"
include "Apps/rhythmbox.rc"
include "Apps/deluge.rc"
include "Apps/eog.rc"
include "Apps/eom.rc"
include "Apps/banshee.rc"
include "Apps/gimp.rc"
include "Apps/inkscape.rc"
include "Apps/panel.rc"
include "Apps/mintmenu.rc"
include "Apps/chrome.rc"
include "Apps/thunar.rc"
GtkRC Tab Width: 8 Ln 418, Col 25 INS
```

Now, Mint-blue-nemo theme should display in xfce like this:



If using nautilus file manager in LM13, make these further changes:

open **Mint-blue-nemo > gtk-3.0 > gtk.css**

at bottom of file, add line:

```
@import url("apps/nautilus.css");
```

Save the file.

To the folder **~/.themes/Mint-blue-nemo/gtk-3.0/apps**

add this complete file - name it **nautilus.css**

```
@define-color cluebar_color shade (mix (@bg_color, @selected_bg_color, 0.5), 0.95);
```

```
NautilusWindow * {
```

```
    -GtkPaned-handle-size: 1;
```

```
    background-color: @base_color;
```

```
}
```

```
.nautilus-canvas-item {
```

```
    border-radius: 2px;
```

```
}
```

```
/* desktop mode */
```

```
.nautilus-desktop.nautilus-canvas-item {
```

```
    color: @bg_color;
```

```
    text-shadow: 1 1 alpha (#000000, 0.8);
```

```
}
```

```
.nautilus-desktop.nautilus-canvas-item:active {
```

```
    background-image: none;
```

```
    background-color: alpha (@bg_color, 0.84);
```

```
    color: @fg_color;
```

```
}
```

```
.nautilus-desktop.nautilus-canvas-item:selected {
```

```
    background-image: none;
```

```
    background-color: alpha (@selected_bg_color, 0.84);
```

```
    color: @selected_fg_color;
```

```
}
```

```
.nautilus-desktop.nautilus-canvas-item:active,
```

```
.nautilus-desktop.nautilus-canvas-item:prelight,
```

```
.nautilus-desktop.nautilus-canvas-item:selected {
```

```
    text-shadow: none;
```

```
}
```

```
/* browser window */
```

```
NautilusTrashBar.info,
```

```
NautilusXContentBar.info,
```

```
NautilusSearchBar.info,
```

```
NautilusQueryEditor.info {
```

```

background-image: -gtk-gradient (linear, left top, left bottom,
    from (shade (@cluebar_color, 1.02)),
    to (shade (@cluebar_color, 0.98)));
background-color: @cluebar_color;
border-bottom-color: shade (@cluebar_color, 0.92);
border-radius: 0;
border-style: solid;
border-width: 0px 0px 1px 0px;

-unico-border-gradient: none;
-unico-inner-stroke-gradient: -gtk-gradient (linear, left top, left bottom,
    from (shade (@cluebar_color, 1.04)),
    to (shade (@cluebar_color, 1.01)));
color: @fg_color;
}

NautilusTrashBar.info:backdrop,
NautilusXContentBar.info:backdrop,
NautilusSearchBar.info:backdrop,
NautilusQueryEditor.info:backdrop {
    background-image: -gtk-gradient (linear, left top, left bottom,
        from (shade (@cluebar_color, 1.01)),
        to (shade (@cluebar_color, 0.99)));
    background-color: @cluebar_color;
    border-bottom-color: shade (@cluebar_color, 0.92);

    -unico-inner-stroke-gradient: -gtk-gradient (linear, left top, left bottom,
        from (shade (@cluebar_color, 1.02)),
        to (shade (@cluebar_color, 1.0)));
}

NautilusSearchBar .entry {
}

.nautilus-cluebar-label {
    font: bold;
    text-shadow: 0 1 shade (@cluebar_color, 1.06);
}

.nautilus-cluebar-label:backdrop {
    color: mix (@fg_color, @cluebar_color, 0.2);
    text-shadow: 0 1 shade (@cluebar_color, 1.02);
}

#nautilus-search-button *:active,
#nautilus-search-button *:active:prelight {
    color: @fg_color;
}

NautilusFloatingBar {
    background-color: @info_bg_color;
    border-radius: 2px 2px 0 0;
    border-style: solid;
    border-width: 1px;
}

```

```

border-color: darker (@info_bg_color);

-unico-border-gradient: none;
}

NautilusFloatingBar .button {
-GtkButton-image-spacing: 0;
-GtkButton-inner-border: 0;
}

/* sidebar */
NautilusWindow .sidebar,
NautilusWindow .sidebar .view {
background-color: #2a5a8a; /*bg_color*/

color: #ffffff; /*fg_color*/
/*text-shadow: 0 1 shade (shade (@bg_color, 0.95), 1.04); */
}

NautilusWindow .sidebar row:selected {
color: @selected_fg_color;
/*text-shadow: 0 -1 shade (@selected_bg_color, 0.8); */
}

NautilusWindow .sidebar .frame {
}

NautilusWindow .pane-separator {
background-color: shade (shade (@bg_color, 0.95), 0.94);
border-color: @dark_bg_color;
border-style: solid;
border-width: 0;

-unico-border-gradient: none;
-unico-inner-stroke-width: 0;
}

/* FIXME - Just a workaround atm. */
NautilusWindow .primary-toolbar .button {
-unico-border-gradient: -gtk-gradient (linear, left top, left bottom,
from (alpha (shade (@bg_color, 0.0), 0.0)),
to (alpha (shade (@bg_color, 0.0), 0.0)));
}

NautilusWindow .primary-toolbar .button:hover {
-unico-border-gradient: -gtk-gradient (linear, left top, left bottom,
from (shade (@bg_color, 0.7)),
to (shade (@bg_color, 0.6)));
}

```

Save the file.

Go to `~/themes/Mint-blue-nemo/gtk-3.0/gtk.widgets.css`
Scroll down to Menu section

Make these changes to the **background-color** lines in these two sections:

```
/******  
* menu *  
*****/  
GtkTreeMenu.menu,  
GtkMenuToolButton.menu,  
GtkComboBox .menu {  
    background-color: #ffffff; /*shade(@theme_bg_color, 1.18);*/  
}  
  
.primary-toolbar .button .menu,  
.toolbar .menu,  
.toolbar .primary-toolbar .menu,  
.menu {  
    background-color: #ffffff; /*shade(@theme_bg_color, 1.18);*/  
    border-style: solid;  
    border-width: 1px;  
    border-color: @theme_bg_color;  
    border-radius: 0;  
    padding: 1px;  
    color: @theme_fg_color;  
}
```

Save the file.

That's it.

Again, edit the file **index.theme**

Open a terminal, and enter:

```
gedit ~/.themes/Mint-blue-nemo/index.theme
```

Edit the file, changing **Mint-blue-2** to **Mint-blue-nemo** in all instances

except for line:

IconTheme=Mint-X - leave this as is.

Save the file.

Now, it's finished, you can move **Mint-blue-nemo** (as root) from
~/.themes to **/usr/share/themes** -

Open a terminal, and enter:

```
sudo mv ~/.themes/Mint-blue-nemo /usr/share/themes
```

press enter

End of Part 3.